

Fostex®

FULL RANGE SPEAKER UNIT

FE206E

Features

- 'ES cone' paper made of banana plant's fiber
- \varnothing 110mm large ferrite magnet
- Newly designed center cap

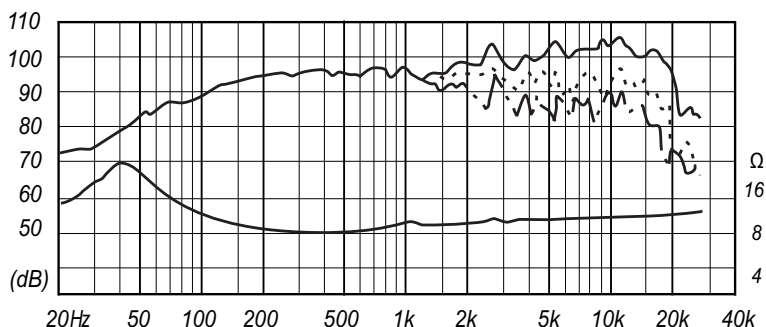


Specifications & Thiele/Small Parameters

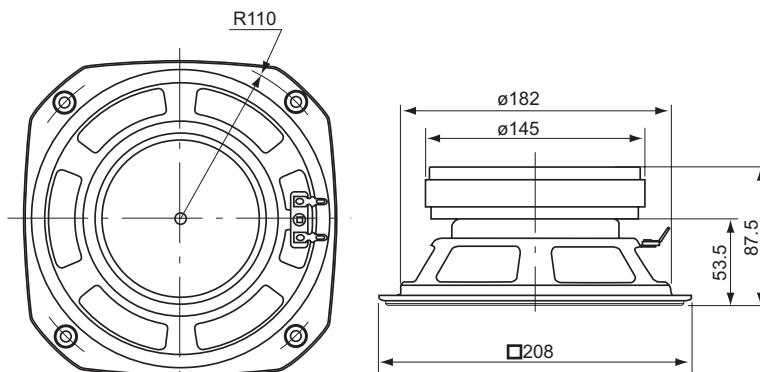
Size	:	200 mm / 8 in
Voice Coil Diameter	:	35 mm / 1.4 in
Cast / Stamped	:	Stamped
Impedance	:	8 Ω
Min. Frequency Response	:	40 Hz
Production Frequency Response	:	f0 - 20 kHz
Sound Pressure Level	:	96 dB/W(m)
Rated Input	:	30 W
Music Power	:	90 W
Magnet Material	:	Ferrite
Magnet Weight	:	
(main)	:	1,067 g / 2.352 lb
(cancel)	:	n/a g / n/a lb
Net Weight	:	3,350 g / 7.385 lb

a	:	81 mm
D	:	162 mm
Sd	:	0.02061 m ²
Zn	:	8 Ω
Fs	:	39 Hz
Re	:	6.69 Ω
Le	:	n/amH
Qms	:	3.73
Qes	:	0.18
Qts	:	0.18
Mms	:	15.35 g
BL	:	11.8 Telsa/m
Vas	:	54.53 L
Xmax	:	1.5 mm
Eff/ η 0	:	1.73 W%
Cms	:	0.0009 mm/N

Frequency Response / Impedance



Dimensions & Mounting Information



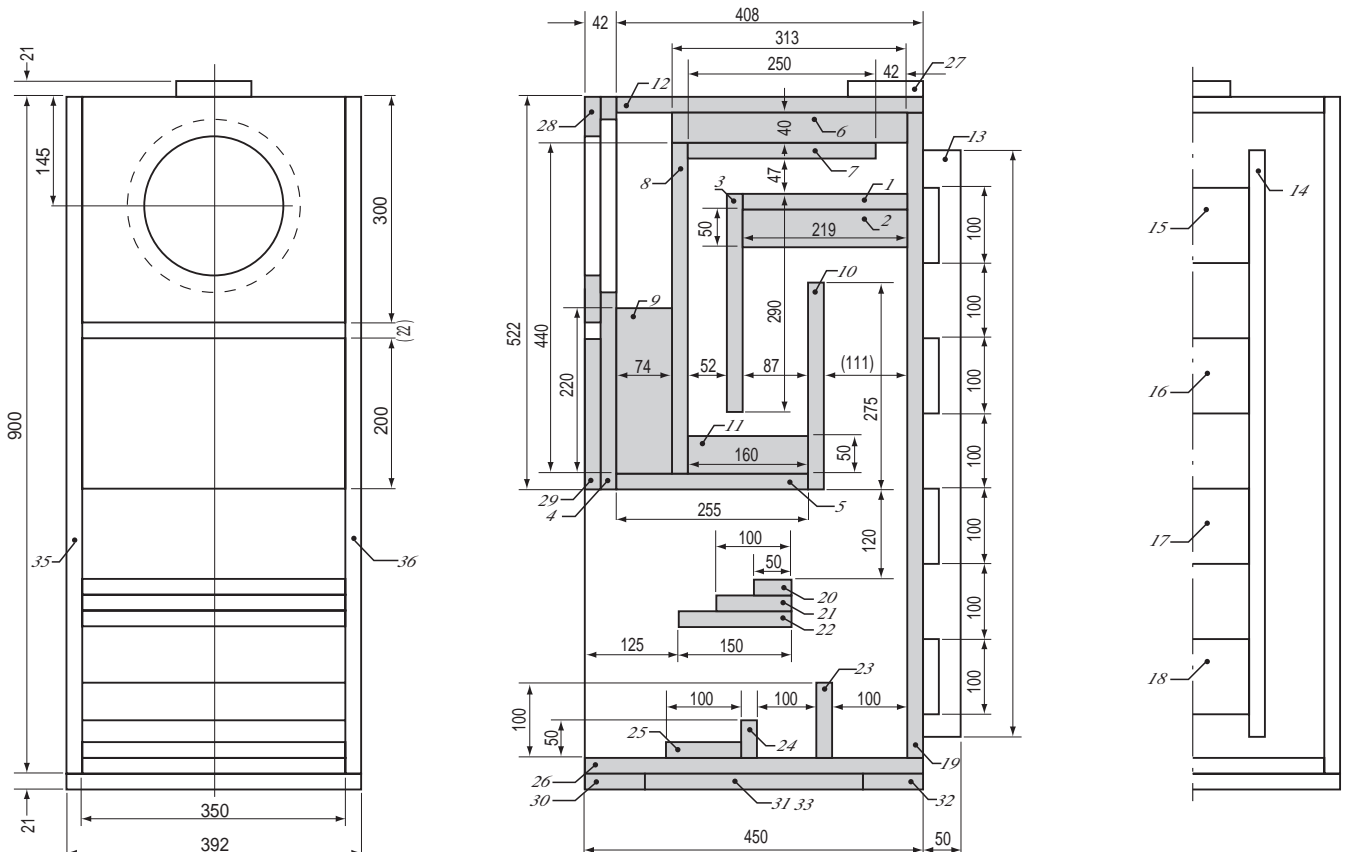
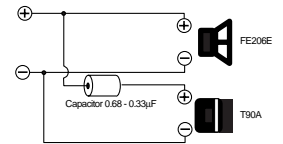
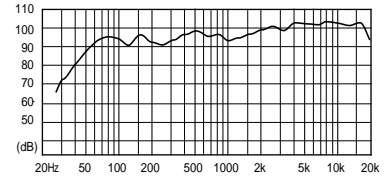
Overall Diameter	:	208 mm / 8 in
Baffle Hole Diameter	:	145 mm / 5.7 in
Depth	:	87.5 mm / 3 in

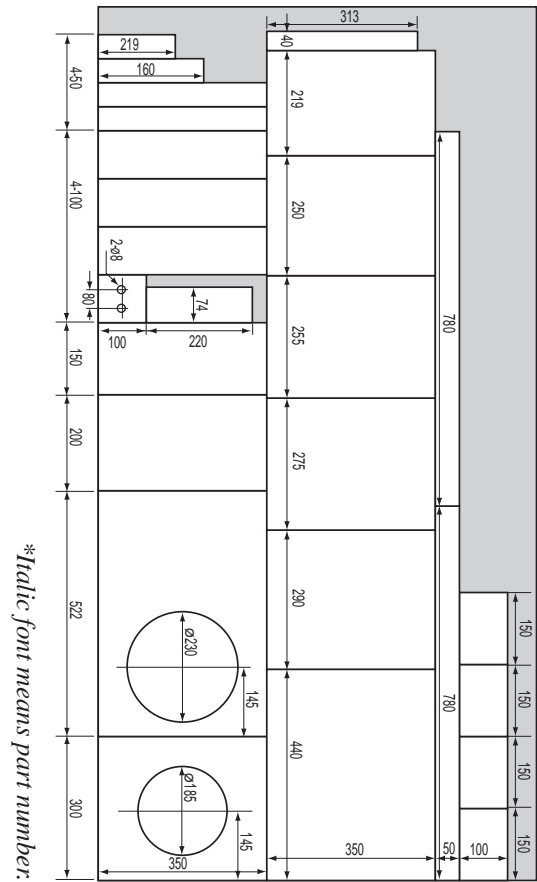
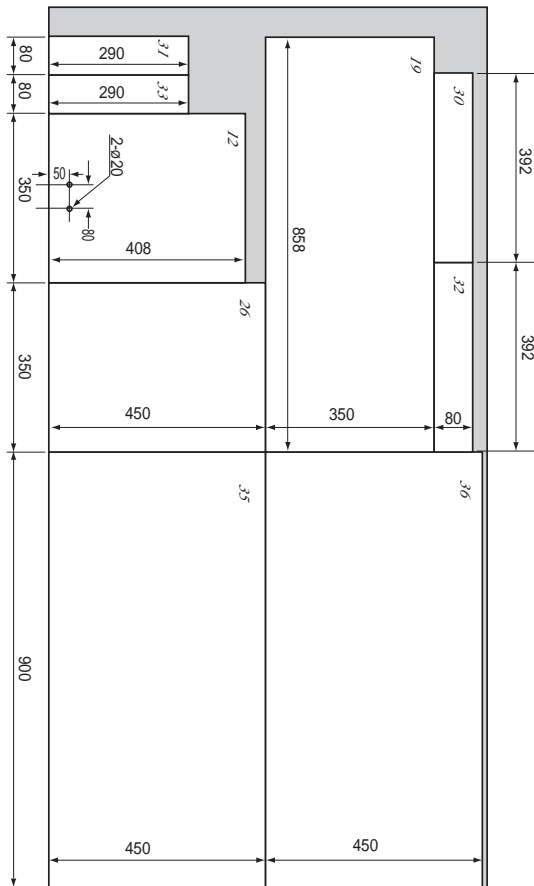
FE206E

Recommended Back Loaded Horn Type Enclosure

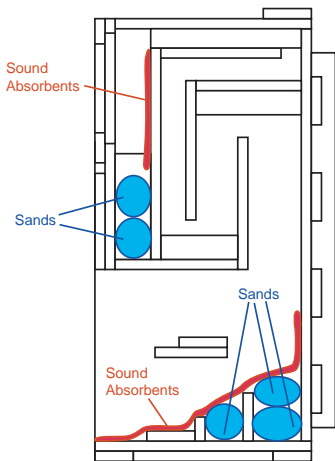


- This example shows a 'back loaded horn' type enclosure for FE206E.
- FE206E's magnetic circuit with $\varnothing 146\text{mm}$ large ferrite magnet provides sharper resonance makes the unit suitable for a back loaded horn type enclosure.
- 21mm thick plywood is used for main section and side panels to ensure a strong enclosure.
- Two way system using super tweeter T90A is also recommended.





**Italic font means part number.*



- This example has sufficient internal volume . However, if you prefer 'tighter' sound reproduction, you can reduce airspace using sand or other fill material.
- Placing thin sound absorbent material as shown enable reduction of peaks & dips around 150 to 400Hz band width. However, it may reduce transient response. You should adjust to taste.
- In order to avoid unwanted mid/high frequency dispersion from the horn, we recommend damping the enclosure with fill and sound absorption material.

- FE206E designed for use in a back loaded horn type enclosure and it is generally unsuitable for bass reflex because of its over damping sound characteristics. However, it is possible to use the FE166E in a bass reflex enclosure as shown.
- This example is a narrow and tall style bass reflex type enclosure. Internal volume of 45 liters tuned to approximately 50Hz (Fb).
- Low frequency response from around 120Hz is gently damped with a controlled peak at 50 - 60Hz.

Bass Reflex Type Enclosure

